

**GENERAL ENGINEERING
DIVISION (GED)
KARACHI SHIPYARD AND
ENGINEERING WORKS LTD.**

SINCE 1957



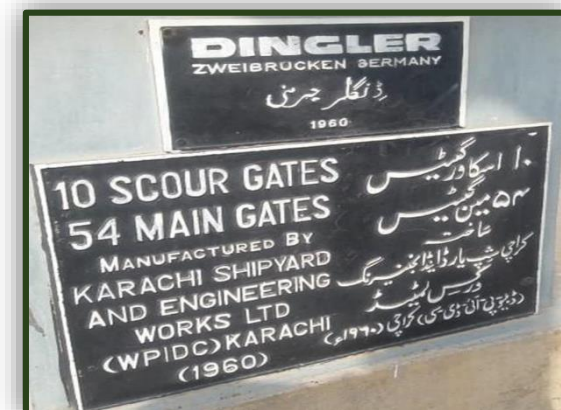
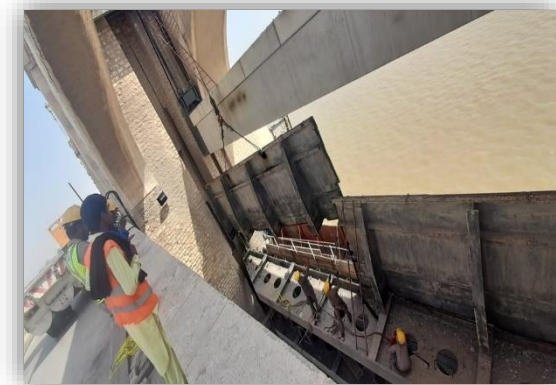
RIVER BARRAGE GATES FABRICATION AND INSTALLATION



GED, KSEW is historically remained involved in Barrage Gates replacements since beginning. GED, KSEW replaced 54 X Main Gates and 10 X Scour Gates in collaboration with DINGLER Germany back in year 1960. GED, KSEW is currently engaged in complete replacement of 6 x River Sluice Gates of Sukkur Barrage based on newly designed gates by Design Consultant ACE-NDC JV Australia under the overall project management by World Bank. Each gate weigh 50 tons. Complete fabrication of each gate is carried out at GED Steel Construction Shop which includes its pre-fabrication, welding, grit blasting, painting, test assembly and all the allied works including removal of old gate at site & commissioning of new gates.

The Project involves complete rehabilitation of Caisson / Pontoon, tug boats, gantry cranes. Hydraulic steel work as sluice, radial, flap, regulator gates, tunnel shafts, pen- stocks etc. for dams, barrages and head works is also carried out by GED KS&EW.

GED, KSEW takes pride in maintaining confidence of Barrage Authorities since 1960.





LIFTING/ HOISTING EQUIPMENT/ CRANES

GED specializes in manufacturing and assembling overhead cranes. These cranes come in different sizes and can be operated manually or with electricity. They can be controlled from either the ground or a cabin. They can have a single or double girder design and can lift loads ranging from 5 tons to 40 tons. Currently, GED, KSEW is teaming up with CMM-Russia to locally produce an 80-ton luffing crane. GED, KSEW also performs complete overhauling of Overhead Cranes/Luffing Cranes. A collaboration between CMM-Russia & GED, KS&EW is in place to meet complete luffing cranes/gantry cranes engineering solutions. GED, KSEW is carrying out complete MOH of 32 X ton luffing crane. MOH Package includes complete renewal of machinery and structural rehabilitation with certification from a 3rd party. GED KS&EW recently rehabilitated 4 x Gantry cranes of Sukkur Barrage.

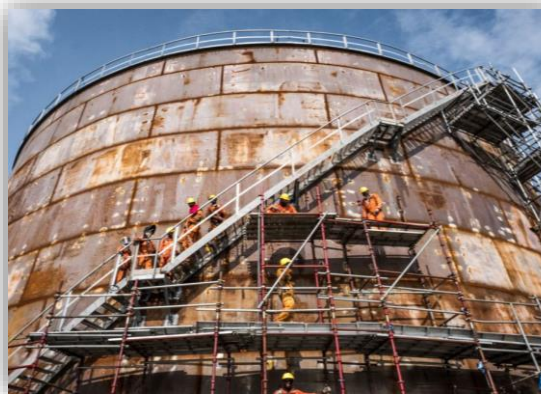
GED, KSEW takes pride in installing 10 X Overhead Cranes for Pakistan Railways in last 10 years up to 40 X Tons Capacity.



PRESSURE VESSELS & LPG STORAGE TANKS

KSEW is known for making different types of pressure vessels and storage tanks. These tanks can be used above ground, underground, or mounted on trailers, vehicles, or skids. They are used for storing various liquids like water, fuel oil, edible oil, molasses, minerals, chemicals, and petrochemicals. These tanks meet the standards set by ASME Section VIII Div 1.

- KSEW is a pioneer in manufacturing of cylindrical LPG Tanks up to 100 Tons capacity according to ASME requirements. Large-capacity LPG storage tanks can be built at the site according to the customer's requirements.
- KSEW has already supplied hundreds of LPG Tanks conforming to international standards to various clients.
- Each pressure vessel/storage tank is hydrostatically tested during construction and surveyed by International Classification Society surveyors.





SUGAR MILL ROLLERS, SHAFTS, PINIONS ETC

GED, KSEW provides complete sugar factories as a one-stop solution. They learned manufacturing techniques from Stork Werkspoor of Holland. In 1981, they teamed up with Five-Cail Babcock of France to build Farhan Sugar Mills (Sheikh Bhirkio) capable of crushing 2000 tons, expandable to 3000 TCD, and Matiari Sugar Mills with a capacity of 3000 tons, expandable to 5000 TCD. GED, KSEW has successfully built, set up, and started operations for 8 sugar mills all over Pakistan. Re-shelling of Sugar Mill rollers and manufacturing of Mill cheeks is also a KSEW specialty. KSEW can safely claim that all sugar mills in Pakistan carry one or more equipment/machinery manufactured by GED, KSEW.



GED, KSEW takes pride in exporting sugar mill rollers, Pinions & other sugar mill components successfully to Thailand & Philippines in recent years. GED, KSEW now exploring South American Sugar Industry region for sugar mill roller orders.



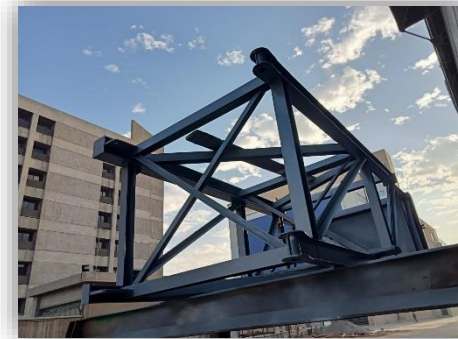
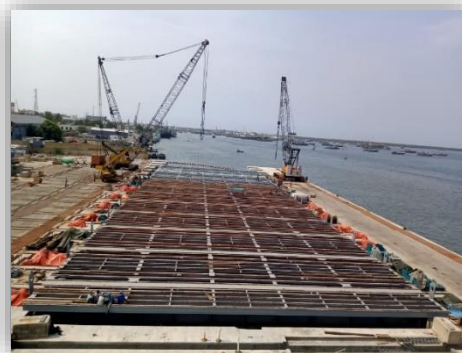
SHIP LIFT & TRANSFER SYSTEM FABRICATION

KSEW has installed a Ship Lift and Transfer System (SLTS) to boost its shipbuilding and repair capabilities. This system allows KSEW to construct and repair multiple vessels simultaneously, with a lifting capacity of 7881 tons and 12 parking stations.

KSEW GED fabricated & installed SLTS platform (2000 tons) consisting of 8 sections and 115 blocks. The project was undertaken in collaboration with Syncrolift AS, Norway. Additionally, 56 trestles weighing 8.2-ton, 398 Rail Crossings, 30 winch covers, 112 transition rails and test frame are also fabricated in-house by GED, KSEW.

Assembly & installation of mechanical equipment & their accessories carried out as per Lloyd's Register UK (LR) Certifications by GED, KSEW.

The Ship Lift and Transfer System (SLTS) project is a significant achievement for Pakistan, and GED, KSEW takes pride in its substantial contribution. This showcases the impressive heavy engineering abilities of GED, KSEW, which have been certified by Lloyd's Register of the UK.



KS&EW RIGS

Oil & Gas Development Company Limited (OGDCL) Drilling Operations department hired the services of M/s. Karachi Shipyard & Engineering Works (KSEW) for repairing/reinforcement of deteriorated areas of Substructure basement, setback and support tables of drilling Rig N-4. The scope of works for the Rig N-4 Structure repair works includes but not limited to Grit blasting, Cutting, Fabrication, Welding and Painting of Rig substructure basement, setback and support tables which are high strength steel structures. Achieving this milestone shows how well they worked together and hints at more opportunities for future projects as partners.

MD Direction's

"Technology is at the very heart of our modern Shipyard. As we look to the future, our reliance on engineering and technology is not expected to diminish. All of our people need to understand technology's central role; however, it is state-of-the-art material and engineering excellence that will continue to be the keystones to providing us with confidence to build Viable Engineering Solutions with the intent to":

- Maximize the likelihood of achieving and continuing to achieve cost effectiveness, quality and schedule; whilst
- Minimizing the risk posed to personnel, public safety, and the environment.

MANAGING DIRECTOR KARACHI SHIPYARD & ENGINEERING WORKS



GED MISSION STATEMENT

To provide value addition to our customer through comprehensive and integrated engineering support, while maintaining commitment to cost effectiveness, quality, schedule and service.

GED VISION STATEMENT

To become nation's leading heavy engineering facility of KSEW.

GED SAFETY STATEMENT

To maintain high standards of occupational, health and safety for all employees in compliance with all KS&EW Safe practices and applicable laws and regulations.

GED CORE VALUES

Professionalism, Teamwork, Open Communication, Leadership, Continual Improvement.

For Further Queries:

General Manager General Engineering

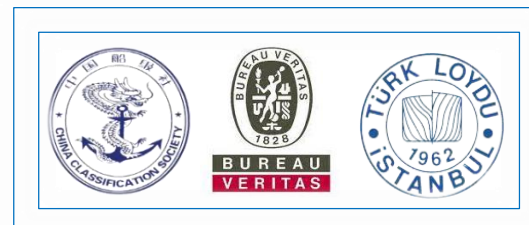
Tel. Off: 021-99214015 Ext 214
Fax: (92-21) 99214020 / 30
Cell: 0332-3139061
Email: mehmood.ali@ksew.com.pk

Manager Business Development GED

Tel. Off: 021-99214015 Ext 288
Cell # +92-332-2284115,
Email: azhar.khan@ksew.com.pk

Manager Contract Management GED

Tel. Off: 021-99214015 Ext 317
Cell # +92-334-8743943
Email: abid.amin@ksew.com.pk



KARACHI SHIPYARD & ENGINEERING WORKS LIMITED

West Wharf, PN Dockyard Road,
Karachi 74000

Tel: +92- 21-9921 4045-64 (20 Lines)

Fax: +92-21- 9921 4020, 99214030

@ShipyardsKarachi

Karachi Shipyards Official



MINISTRY OF DEFENCE PRODUCTION
GOVERNMENT OF PAKISTAN